

Red Natura 2000 marina

21 September 2011, Madrid

The EU policy framework and current status concerning marine Natura 2000

Fotios Papoulias

DG Environment, unit Nature
European Commission



Outline of the presentation

- **EU marine policy – The Marine Strategy Framework Directive – Establishing MPAs**
- **Natura 2000 in the marine**
- **Current activities/priorities**

Marine Conservation Policy in the context of the EU biodiversity policy

Biodiversity policy

Marine Strategy Framework Directive

**Nature conservation:
Natura 2000**



International commitments

- **Network of Marine Protected Areas** (EU Council Conclusions on the 9th Conference of the Parties to the Convention on Biological Diversity (CBD) :

The EU WILL STRIVE FOR the establishment of a global representative network of marine protected areas by 2012 within and beyond areas of national jurisdiction inter alia through

- *the full and timely implementation of Natura 2000 in marine areas*
- *the establishment and management of protected areas networks in the context of the Regional Marine Conventions*

- **2020 Global target (agreed at CBD COP10):**

By 2020, at least 17 % of terrestrial and inland water, and 10 % of coastal and marine areas, especially areas of particular importance for biodiversity and ecosystem services, are conserved through effectively and equitably managed, ecologically representative and well connected systems of protected areas and other effective area-based conservation measures, and integrated into the wider landscape and seascapes.

EU Biodiversity Strategy

- **« Our life insurance, our natural capital: an EU biodiversity strategy to 2020 »**
 - nature sub-target: complete the Natura 2000 network, including in the marine, by 2012
 - Preserve vulnerable marine ecosystems
 - Sustainable use of fisheries resources

The EU Marine Strategy Framework Directive

Directive 2008/56/EC of 17 June 2008

The Marine Strategy Framework Directive (MSFD) constitutes the **environmental pillar of the EU's Integrated Maritime Policy**.

The Directive establishes a framework within which:

- Member States shall take **the necessary measures** to achieve or maintain **good environmental status (GES)** in the marine environment by the year **2020** at the latest.
- The directive provides a **framework**: a structure and a timeline but no details. Details are developed within a common implementation strategy.

MSFD - MPAs

(Art 13) MSs to present Programmes of measures by 2015 to achieve or maintain GES. These shall include spatial protection measures, contributing to coherent and representative networks of marine protected areas, adequately covering the diversity of the constituent ecosystems, such as:

- Special Areas of Conservation (Habitats Directive),
- Special Protection Areas (Birds Directive),
- and marine protected areas as agreed by the Community or Member States concerned in international or regional agreements to which they are parties.

} Info available
by 2013

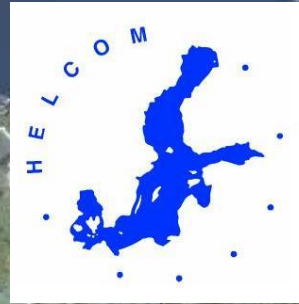
MPA networks

- **A collection of MPAs operating cooperatively ensuring ecosystem functioning,**
- Well-planned networks provide **spatial links** to maintain ecosystem processes and connectivity, improve resilience, and help to ensure long-term sustainability,
- Should help to **manage the sustainable use of marine resources**



**OSPAR
COMMISSION**

*Protecting and conserving the
North-East Atlantic and its resources*



Commission on the Protection
of the Black Sea Against Pollution
Permanent Secretariat



UNEP



MAP
United Nations Environment
Programme Mediterranean
Action Plan

NORTH ATLANTIC
OCEAN

EUROPE

ASIA

AFRICA

SOUTH ATLANTIC
OCEAN

MPAs & Regional Sea Conventions

	Biodiversity Program	MPAs	High Seas
HELCOM	Y	Y	N
OSPAR	Y	Y	Y
Barcelona Conv.	Y	Y	Y
Black Sea Conv.	Y	Y	N

Marine Natura 2000 - background

- **Natura 2000 cornerstone of the EU biodiversity policy**
- **Largely complete on land – needs to be extended in the marine, esp. offshore**
- **Applies to waters where Member States exercise sovereign rights: territorial waters, EEZ, other protection zones (environmental or fisheries), continental shelf**
- **Marine Natura 2000 a major contribution to preserving marine biodiversity, implementing MSFD**
- **A priority since 2002 (Court rulings, political commitments, marine expert group, marine guidelines, LIFE projects, fisheries measures, biogeographical seminars)**

- **Aim:**
 - ➔ designations substantially complete by 2012
 - ➔ Conservation status of marine features stabilised/improved by 2020

Threats to marine biodiversity

- **unsustainable fisheries (eg. bottom trawling, by-catch)**
- **pollution**
- **unsustainable tourism**
- **climate change**
- **shipping, oil/mineral extraction, plastic debris, ...**

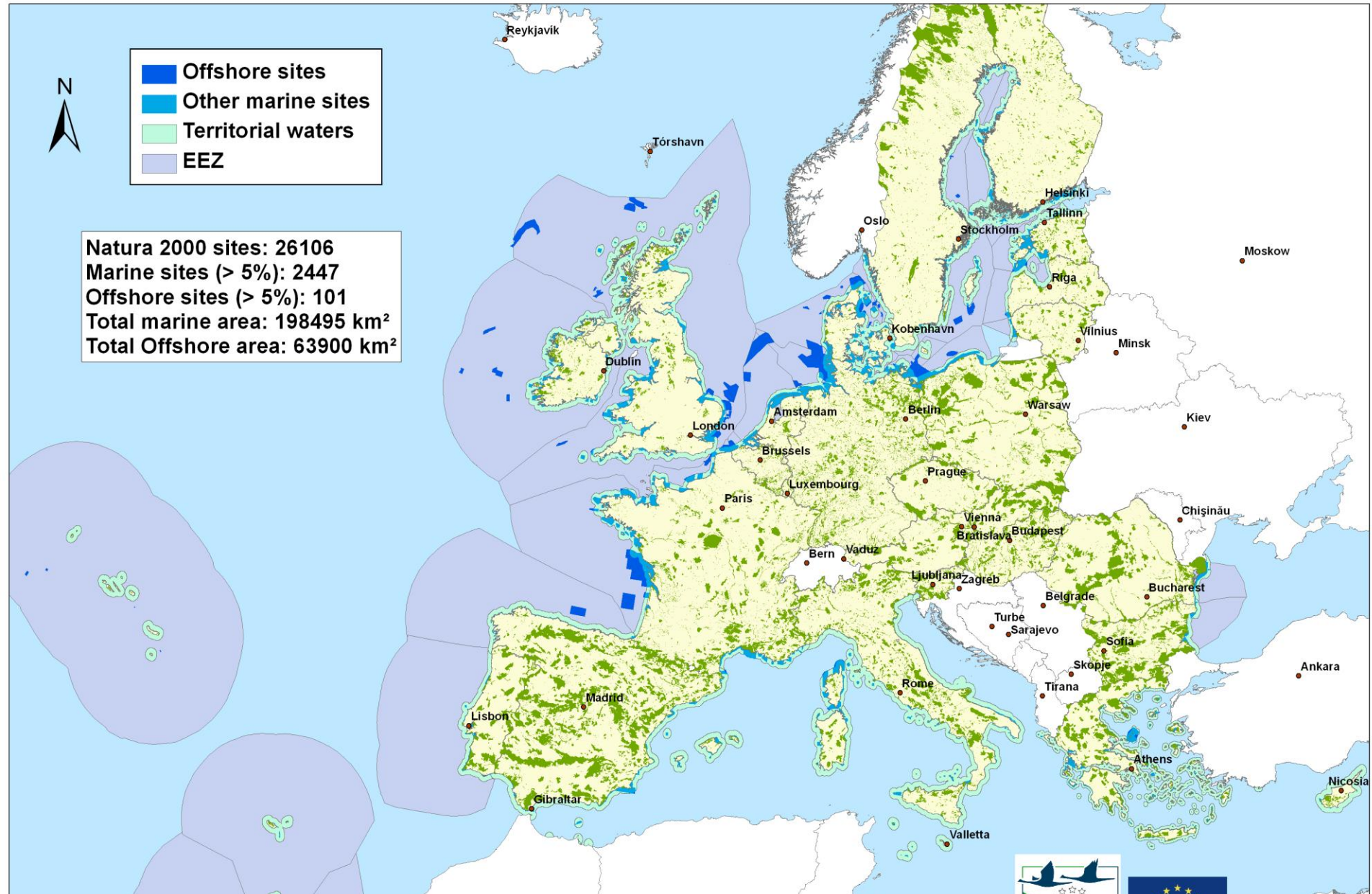
A well planned and managed network of marine Natura 2000 areas will

- ✓ **afford adequate protection to important ecosystems such as seagrass meadows, reefs and seamounts**
- ✓ **enhance important economic services eg. as fish spawning or feeding grounds**
- ✓ **improve the conservation status of most threatened marine species such as seals and marine turtles**
- ✓ **contribute to sustainable use of marine resources.**

The marine Natura 2000 network



Natura 2000 sites: 26106
Marine sites (> 5%): 2447
Offshore sites (> 5%): 101
Total marine area: 198495 km²
Total Offshore area: 63900 km²



Marine N2000 - Status

As of Feb 2011:

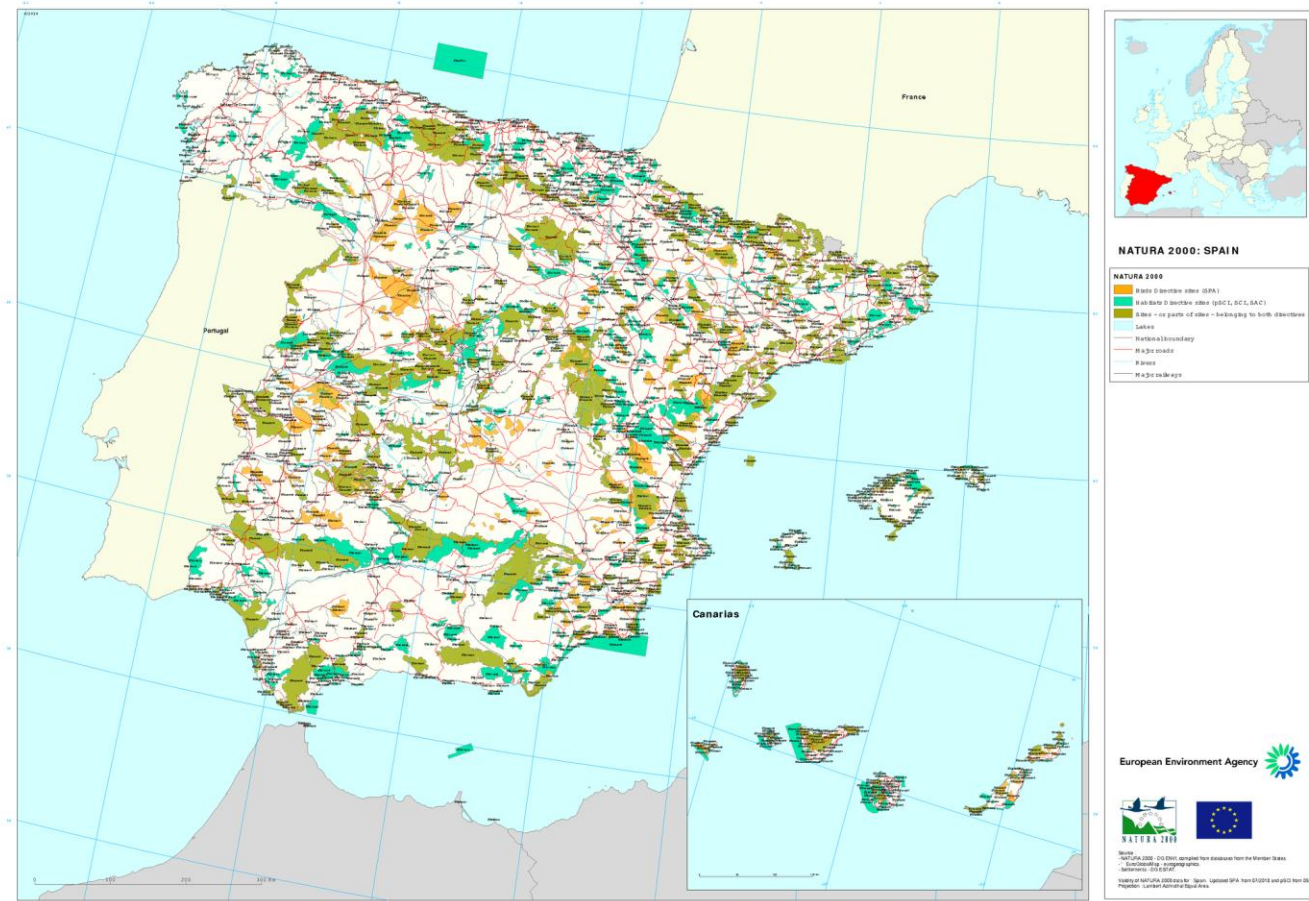
Total 26.106 Natura 2000 sites, of which:

- 2.491 sites with a marine component (2.447 with >5% marine), ~198.000 km² (= ~4% of EU seas under national jurisdiction)
 - 1.410 SCIs (~133.000 km²), 700 SPAs (~103.000 km²)
 - 101 sites (~64.000 km²) with offshore component (>5%),
 - **48 sites entirely (>90%) offshore** (DE, DK, UK, IE, NL, PL, PT, FR, SE, ES)
- ***The offshore gap: Most marine N2000 sites coastal or within first 12 nm, >90% of European seas and oceans not covered***



SPAIN

Only offshore site:
El Cachucho



Marine N2000 biogeographical seminars

Assessment of marine SCIs at Regional Sea level:

- Atlantic (Mar 2009),
- Baltic (Nov 2009),
- Mediterranean-Macaronesia-Black Sea (Jun 2010)

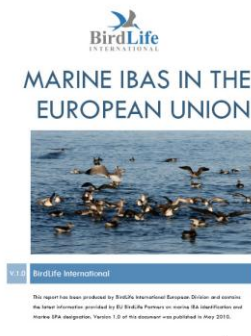
Summary results

Sea Region	Habitats		Species	
	Nr of Conclusions	%SUF	Nr of Conclusions	%SUF
Atlantic	33	21.2	71	33.8
Baltic	22	36.6	34	35.3
Mediterranean	33	30.3	35	17.1
Black Sea	8	25.0	9	11.1
Macaronesian	6	0.0	8	0.0
Note:	Scientific Reserves=unknown counted as not-sufficient			

➤ ***Substantial designations are still needed to fill the insufficiencies***

The way ahead for marine Natura 2000

- **High on the biodiversity agenda**
- **Towards completion of the network in 2012**
 - ➔ Marine SCIs – updated seminar conclusions
 - ➔ ... and SPAs (marine IBA inventory/toolkit)
 - ➔ Research/surveys ongoing in the Member States
 - ➔ Transboundary features: Need for coherence
- **Tackle impacts / disturbance affecting marine**
 - ➔ appropriate protection best supplied at EU level
 - ➔ Need for early consideration of conservation measures, incl. fisheries management, in order to ensure timely implementation
- **Species protection provisions beyond sites**

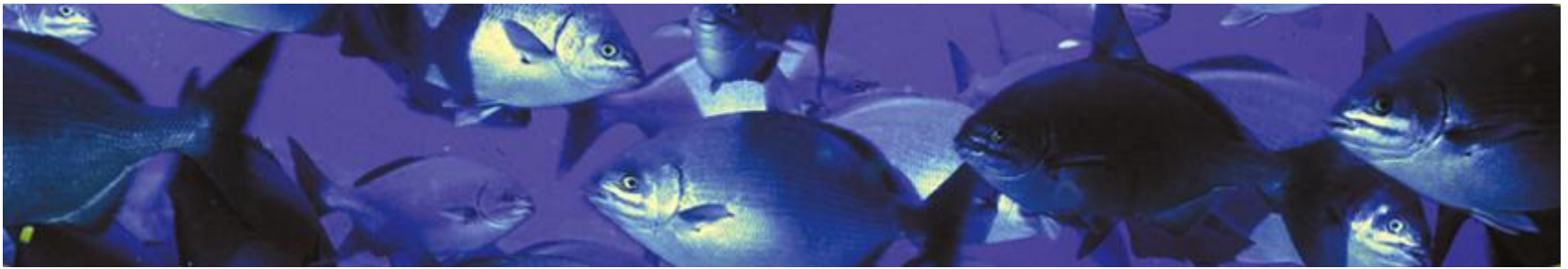


Commission priorities

- **Support / Monitor progress of SCI designations (in the light of marine biog conclusions), marine SPA classifications**
- **Promoting sound management of areas, incl. fisheries measures under CFP**
- **Securing adequate integration in other policies / financing (CFP reform, new Fisheries Fund)**
- **Further ongoing work:**
 - ➔ Prepare common methodology to assess impact of fisheries on marine N2000
 - ➔ Produce FAQ on links between MSFD and Habitats/Birds Directives (GES/FCS, mesures required, monitoring/indicators, management/planning)
- ***The timely completion and proper management of a coherent network of marine Natura 2000 areas is an essential element for healthy marine ecosystems and clean seas***
- ***Big expectations from INDEMARES project***

Guidelines - Natura 2000 in the marine environment.

- **Marine Habitat types definitions:** Update of “Interpretation Manual of European Union Habitats”
http://ec.europa.eu/environment/nature/natura2000/marine/docs/appendix_1_habitat.pdf
- **Guidelines for the establishment of Natura 2000 in the marine**
http://ec.europa.eu/environment/nature/natura2000/marine/index_en.htm
- **Fisheries measures for marine Natura 2000 sites:** A consistent approach to requests for fisheries management measures under the Common Fisheries Policy
http://ec.europa.eu/environment/nature/natura2000/marine/docs/fish_measures.pdf
- **Sectoral guidance also relevant to marine:** wind-energy, mineral extraction, ports&estuaries
http://ec.europa.eu/environment/nature/natura2000/management/guidance_en.htm



Thank you for your attention!

http://ec.europa.eu/environment/water/marine/index_en.htm

http://ec.europa.eu/environment/nature/natura2000/marine/index_en.htm

http://ec.europa.eu/environment/nature/index_en.htm