

Wildlife management in timber production forests of the Congo Basin.

*Forest management as a tool for cooperation and rural development in
Central Africa*

**Madrid +5, Responsible Trade of Forest Products.
Madrid, 17/11/2011.**



Conservation Programmes

LIVING CONSERVATION



In Central Africa:

- 336 spp. of **amphibians** 114 endemic sp.
- 438 spp. of **reptiles** 33 endemic sp.
- 270 spp. of **mammals** 170 endemic sp.
- >300 spp. of **forest birds**

Threats to emblematic forest species



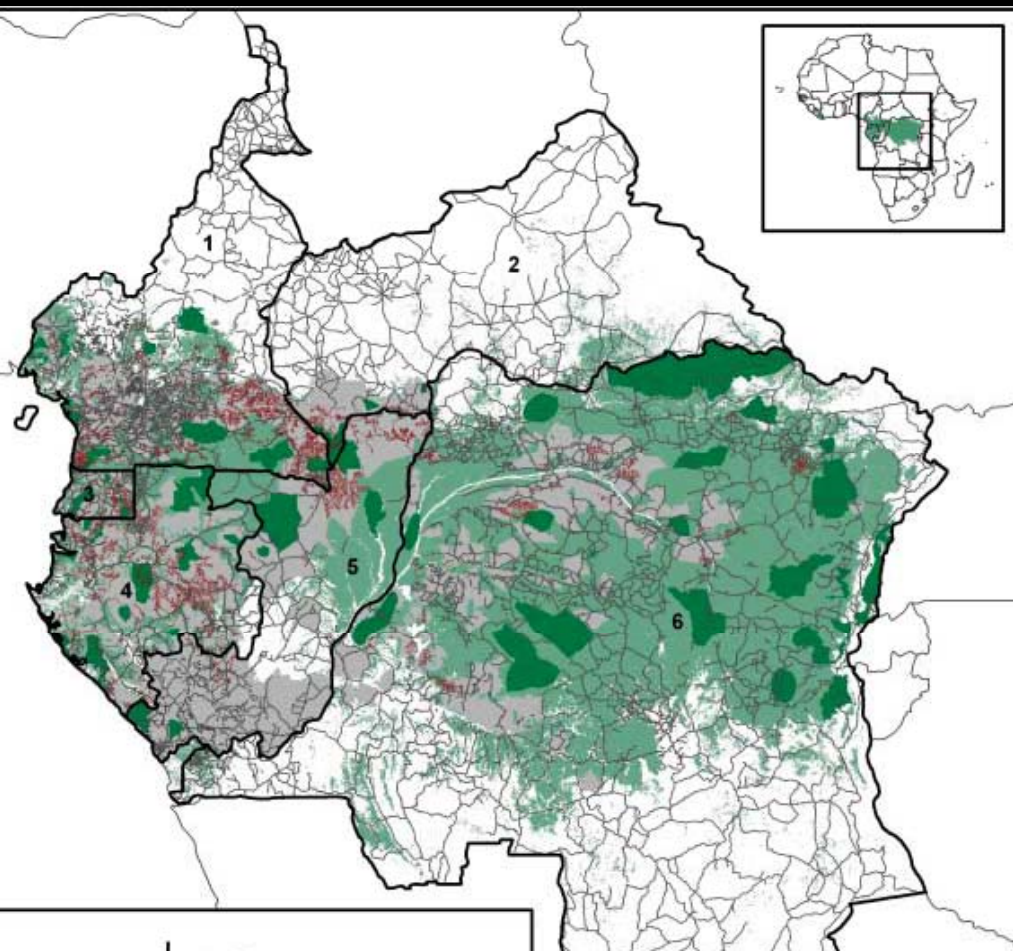
- ~ 50-100 elephants killed each day in Africa!
- Logging roads influence elephant distribution
(Stokes *et al.*, 2010)

5% = annual decline
rate of ape populations.
(Walsh *et al.*, 2003)

0% of great apes range



What is at stake?



- Conservation of Biodiversity

= 12%

COMPATIBLE

CONTRIBUTE TO

- Production forests



Legal obligations of concessionaires?

- “*Ensure protection of wildlife*” (Transport of bushmeat, internal rules, alternative sources of proteins, close logging roads)
- FLEGT (Cameroon: UFA / Indicator 5.1) :
 - Prevent participation of employees in bushmeat trade
 - Encourage initiatives of law enforcement.

International conventions

- CITES, CBD, Regional Action Plans, etc.

The legal framework exists ...

Market-driven tools



co-certification

Respect of the Law ▶ ▶ ▶ Sustainable management

Forest Stewardship Council:



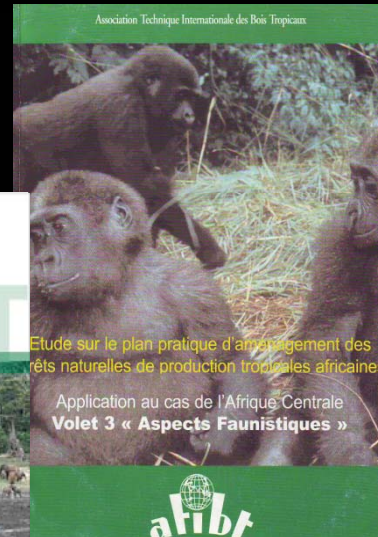
- **5Mha** in Congo, Gabon and Cameroon (11 certificates).

~20% of production forests (ha).

- **Vague requirements** concerning wildlife protection & management!

Need for result-oriented indicators

Experts' recommendations



Concessionnaires must adhere

the 3 main challenges :



1. Law enforcement.

2. Definition of standards/objectives.

3. Get the forestry sector involved.

Basic principles

Wildlife
WOOD
PROJECT



Principle 1:

WANTING to manage wildlife responsibly.

Principle 2:

KNOWING wildlife populations and threats.

Principle 3:

REDUCING the direct impact of logging.

Principle 4:

MINIMIZING the indirect effects (i.e.: poaching, etc.).

Principle 5:

Roles & responsibilities



Forestry sector:

- Adhere to these 5 principles for a responsible wildlife management.

Member certification bodies

- Develop standards based on result-oriented indicators.

Government and Forestry Administration:

- Law enforcement and awareness.

NGOs and experts:

- Capacity building / Technical support / Evaluation & audits.
- Denunciation of illegal and unacceptable practices.

Donors

- Promote long-term support to model-case experiences



Technical challenges?

- Numerous workshops.
- Numerous technical documents.
- Numerous partnerships with the private sector.

Political challenges?



Political challenges?



common vision for the future of wildlife
in timber production forests
of the Congo Basin?



Thank you for your attention!

ZSL