

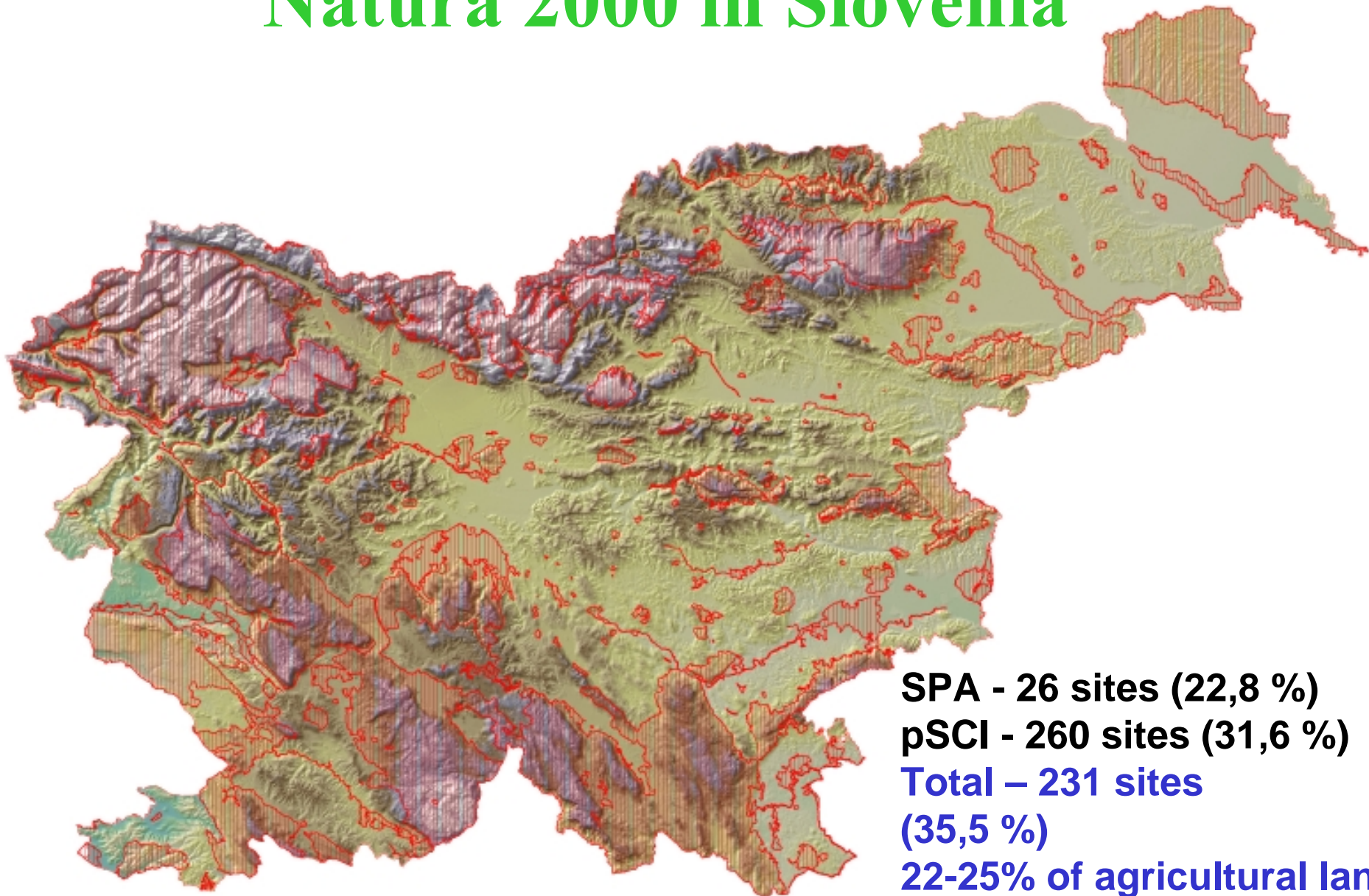


REPUBLIKA SLOVENIJA  
MINISTRSTVO ZA OKOLJE IN PROSTOR

# **Slovenian Natura 2000 management programme - integration in EU funding programmes**

**Andrej Bibič**  
**Ministry for the Environment and Spatial  
Planning**

# Natura 2000 in Slovenia



**SPA - 26 sites (22,8 %)**

**pSCI - 260 sites (31,6 %)**

**Total – 231 sites**

**(35,5 %)**

**22-25% of agricultural land**

**70% of forests**



## Natura 2000 “pillars”

**Obligatory measures** to maintain or restore favourable conservation status of Natura 2000 species and habitat types:

Stimulating development based on Natura 2000 qualities

Assessment of plans and projects regulated in details to assure fact-based and objective decision making

Avoiding the deterioration of existing conservation status –  
Natura 2000 Management Programme 2007-2013

Stimulating development activities based on Natura 2000 qualities –  
Rural and Regional development programmes

# Operational Programme (2007-13)

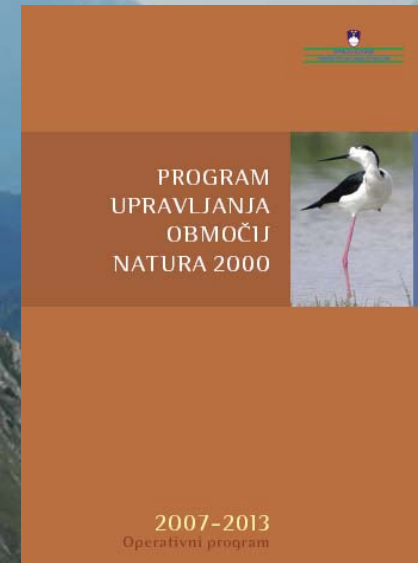
Bringing answers to questions:

**WHAT & WHY?**

**DETAILED  
CONSERVATION  
GOALS  
FOR EACH  
NATURA 2000  
SITE**

**HOW?**

**CONSERVATION  
MEASURES  
(+ investment,  
incentives)**



**WHO?**

**RELEVANT SECTORS.**

**WHERE?**

**INTERACTIVE  
ATLAS**



# Natura 2000 operational programme

- conservation objectives for each Natura 2000 site, and within for each species and/or habitat type
- measures in relation to forestry, hunting, fishing, agri-environment, water management and nature conservation to achieve conservation objectives
- list of investments to enhance nature protection (info centres, cycling paths,...)



# Background – existing national legal instruments

Appropriate steps to avoid the deterioration:

- Legislation of other sectors integrates care for nature conservation / Natura 2000 (in Slovenia almost all sectors)
- Sectoral management with long term plans for sustainable use of natural resources and care for nature
- National Environmental Action Programme, if needed legal basis action plans and operational programmes
- Legal basis for site management, if needed (contractual measures, state ownership, protection regimes)



# Existing management planning as a legal instrument

Horizontal management planning (whole country):

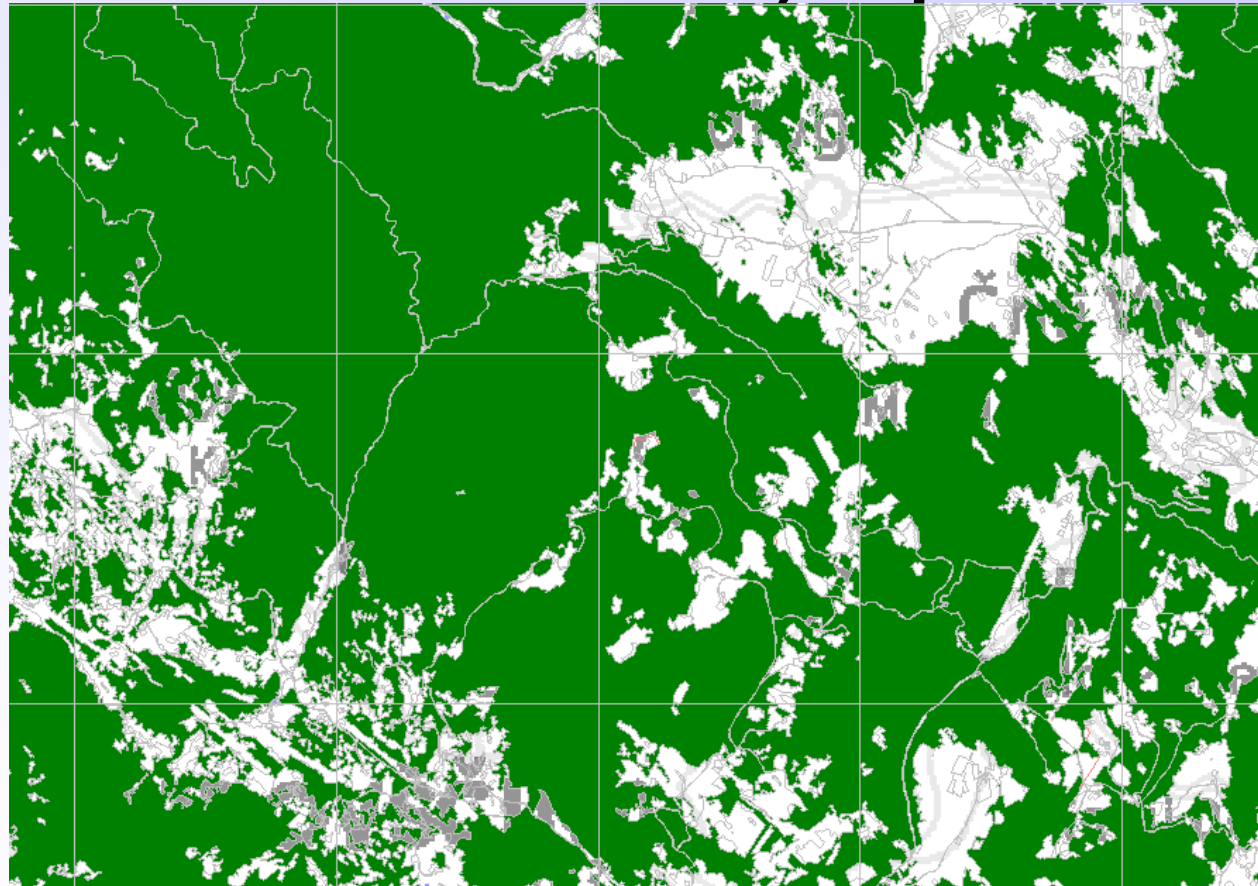
- Management plans (long term - 10 years) and a public service for its implementation in:
  - forestry, hunting, fishing (continental waters and sea)
  - spatial planning
  - water management



# Situation in forests in Natura 2000

All forests fall under forestry legislation, management planning covers all forest via management plans (10 years) and public service (Slovenian Forest Service) in place.

**Example:  
Trnovski  
gozd**





# Implementation – integration in forestry and hunting

Forest owners are obliged to manage forests in accordance with state adopted forest management plans.

Owners of hunting rights (hunting clubs) are obliged to hunt in accordance with state adopted hunting management plans.

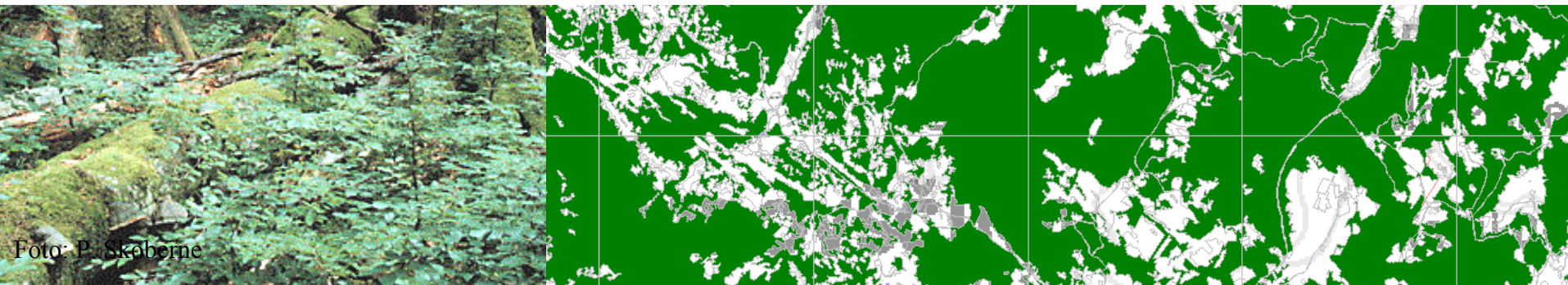
Both management plans prepared and approved with public participation.

Natura 2000 measures integrated in forest and hunting management plans.

# Result for forests in Natura

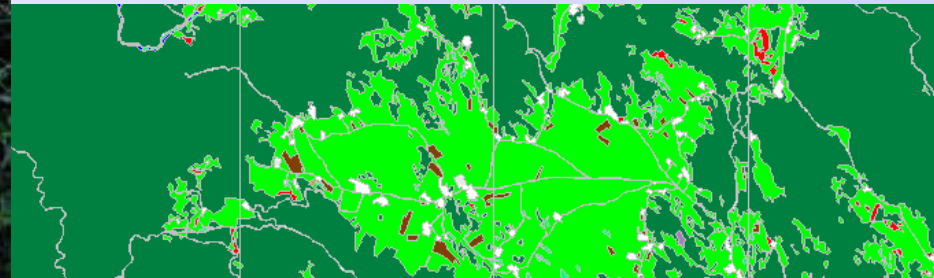
**Example of a measure to achieve conservation objectives (Trnovski gozd) for habitat type Ilirian beech forests:**

- Part of zone of HT 91K0 lies within GR Primorska bukovja, where canopy management takes place. In forests share of beech shall increase, with selective thinning there should be better structure and care achieved and transition to older growth phases speeded up.





# Result for hunting in Natura 2000

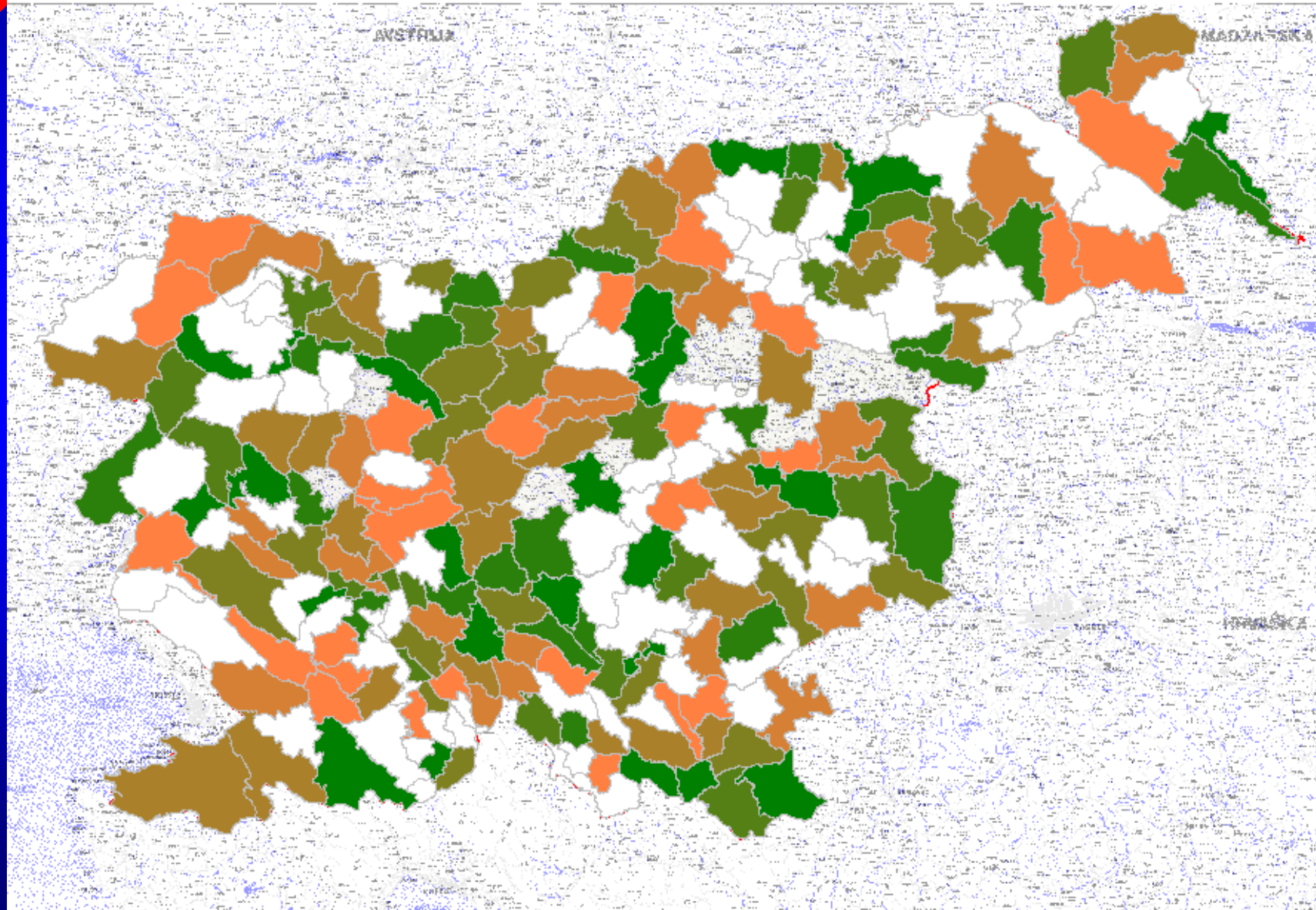


**Example of a measure to achieve conservation objectives (Trnovski gozd) for European lynx:**

- In zone of the European lynx hunting is planned so, that appropriate abundance of populations of large herbivores is maintained, but in a way that allow natural regeneration of forest habitat types.



# Method of integration





# Situation in agriculture in Natura 2000

Horizontal management planning (whole country):

- Guidance with payments (esp. agri-environment), cross compliance (incl. GAEC), investment support – in agriculture.

Specific Natura 2000 management planning (a part of the country):

- Contractual measures (agri-environment and according to Nature Conservation Act - NCA)



# Agriculture in Natura 2000 - preparation

Special attention has been put on approximation of the Rural Development Plan 2007-2013 and the Natura 2000 Management programme 2007-2013.

Usefulness of Natura 2000 payments and agri-environment payments has been checked in light of achieving Natura 2000 site conservation objectives.

Natura 2000 payments on purpose left out.



# Development of Natura 2000 agri-environment measures

**75 % of agricultural land in the country is LFA.  
There are two different types of challenges.**

**Areas:**

**- intensified**

**- abandoned**





# Areas facing land abandonment

Farming is based on grasslands (orography & climate). Objectives to preserve farming in the area are fully compatible with nature conservation objectives. Shift in direct payments to single farm payment encourages more land to be farmed.

No special N2k a-e measures

All agri-environment payments for grasslands (6 types)

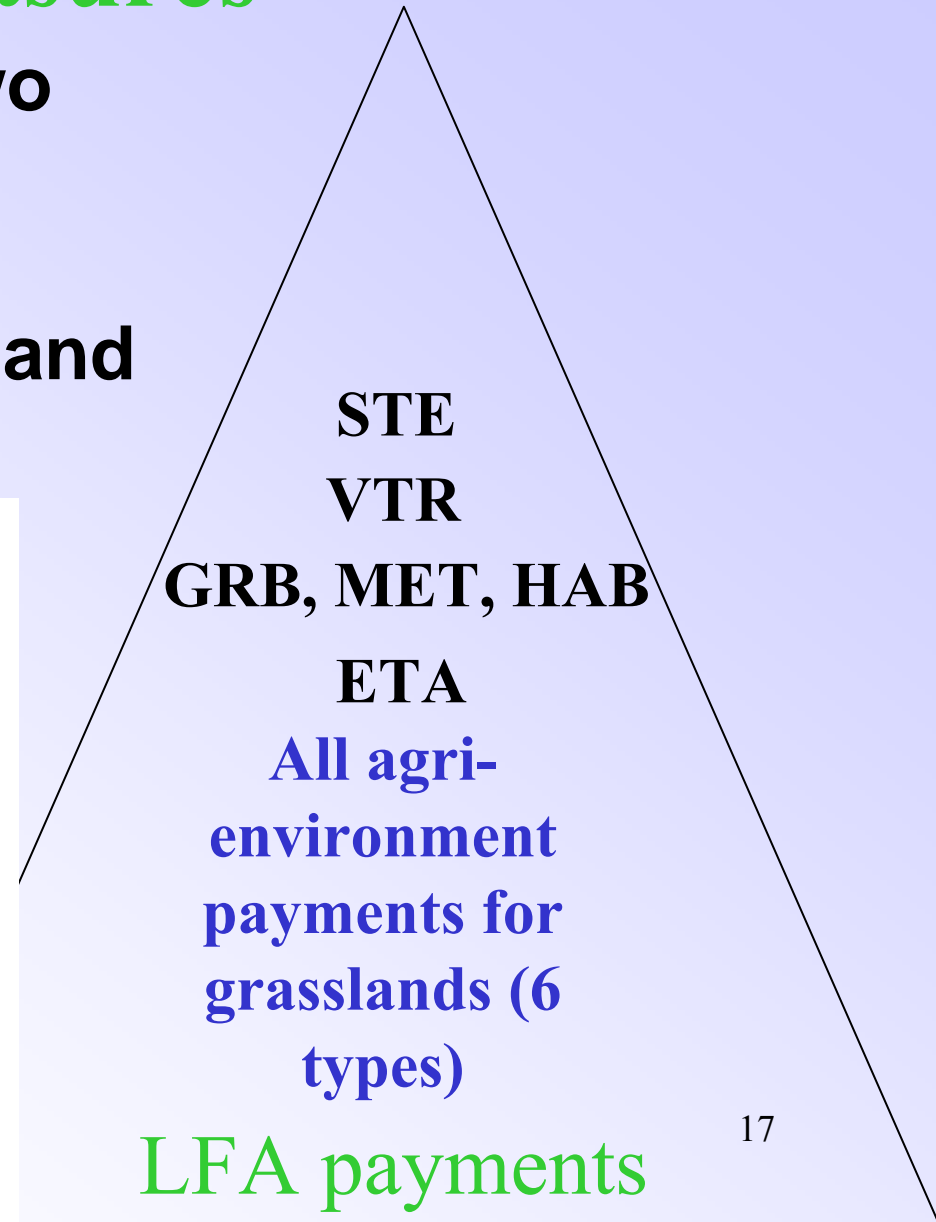
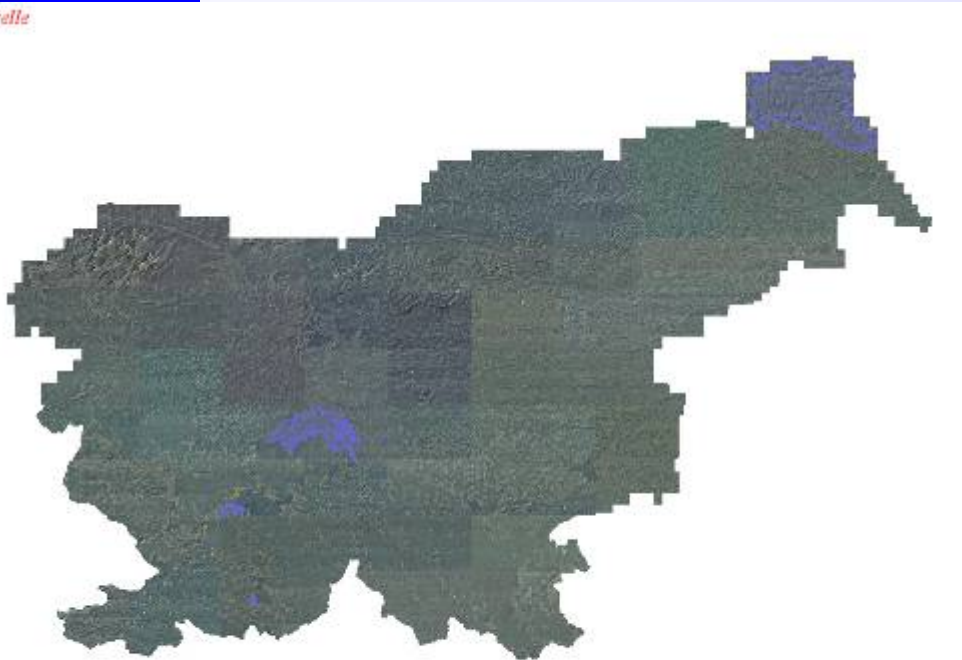
**LFA payments**

# Development of special a-e measures



In the RDP 2007-17 two overall a-e measures designated for endangered habitats, and 5 special N2k a-e

Giselle





# Result - agriculture in Natura 2000 management programme

Foto: L. Božič



## Example of a measure to achieve conservation objectives (Trnovski gozd) for rock partridge:

- In zone of rock partridge further overgrowing of grasslands is being stopped with restoration of grazing. Appropriate use is to be assured via agri-environment programme, measures for low input grasslands. By 2010 this use is maintained on 370 ha, by 2013 it increases to 400 ha.





# Agriculture – interim results at the end of the year 2008

Type of a-e measure	total area	% of the 2010 target	difference from 2006
“conservation of permanent grasslands”	19.409 ha	91%	+74%
HAB/VTR – birds, orchids	1.370 ha	87%	+44%
<b>MET - butterflies</b>	<b>190 ha</b>	<b>44%</b>	<b>-70%</b>
<b>STE – very demanding sites</b>	<b>0 ha</b>	<b>0%</b>	<b>-11%</b>



# Measuring progress

Conservation objectives relate to conservation status of species/HT and are measurable where data was available.

Measures relate to human activities and are as far as possible designed so that progress can be measured.



# Existing management planning as a legal instrument

Specific Natura 2000 management planning (a part of the country):

- Statutory measures (NCA)
  - protected area (park) with an administration
  - permanent protection (with a regime for a site, e.g. strict nature reserve)
  - temporary protection and regulation of an activity



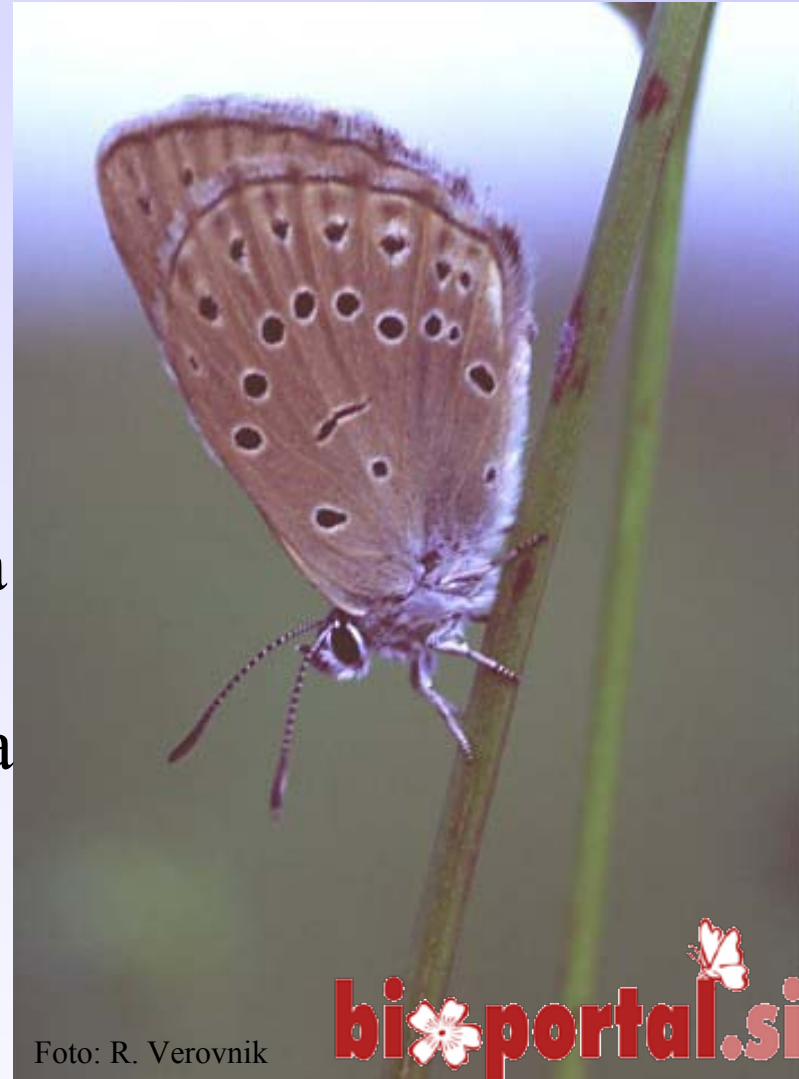
# Measures in protected areas

## Existing protected areas:

- integration in management plan of a protected area
- PA administration implements contractual measures and stewardship

## Planned protected areas:

- integration in protected area regime (new legal act) and later in management plan of a protected area





# Integration in regional development

**To be co-financed from structural funds.**

Therefore in the Operational Programme for Strengthening Regional Development Potential 2007-13 under:

- development priorities *Linking natural and cultural potential*, and *Increasing the competitiveness of the tourist economy*

Set A of Natura 2000 management programme:

- national programme of investments and services tied to the development of park infrastructure for the advancement of tourist offers in the protected areas.

Implemented by the Ministry of the Economy and the Ministry of the Environment and Spatial Planning.



# Integration in regional development

**Info centres**





# Integration in regional development

Second part is to be implemented by local communities.

Therefore in the Operational Programme for Strengthening Regional Development Potential 2007-13 under:

- Development of regions.

Projects shall be endorsed by regional councils.

In Natura 2000 management programme, a list was produced containing project proposals (types of investments and services) that may contribute to the conservation of Natura sites and increase their potential for tourist and regional development (set B and C).



# Integration in regional development

Education  
trails



Foto: B. Vidmar



# Financial resources

## Depend on types of measures:

- Preparation, adoption and inspection of legislation - administrative costs of public administration
- administrative costs of:
  - Preparation of projects
  - Monitoring, when established
  - Communication by public authorities (ministry, nature conservation service, protected area administration, forest service, farmers advisory service)



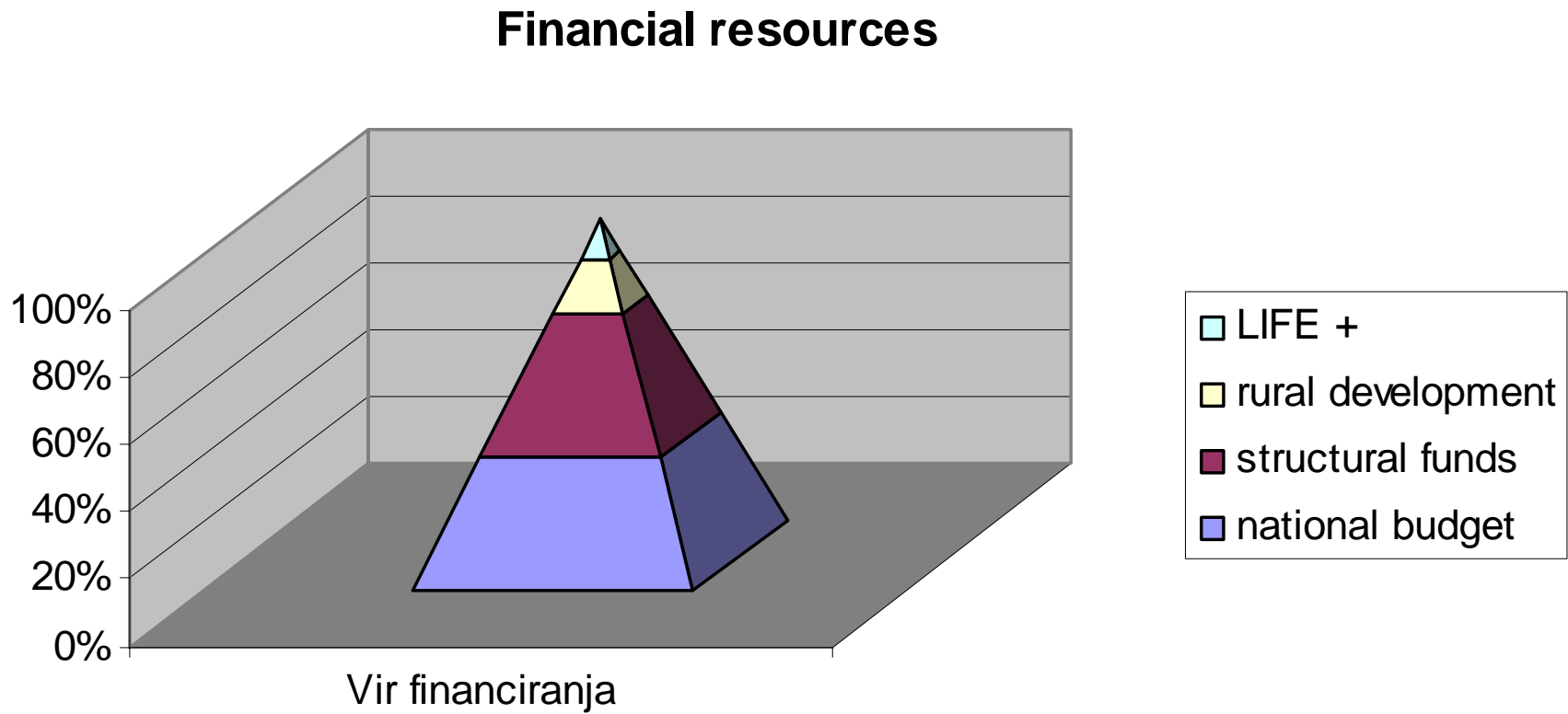
# Financial resources

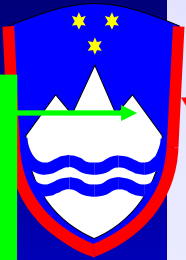
## EU funds

- Investments from the list adopted by the government
  - from structural funds indicative sum 57,3 M€ in period 2007-13
- Establishment of monitoring, some nature conservation measures and additional communication 2 - 2,5 M€ yearly from LIFE+
- Agri-environment measures on Natura 2000 sites from 2,4-2,7 M€ yearly in 2006 to 3,2-3,4 M€ yearly by 2013



# Financial resources





**Year 2005**

Preparation of key content of the Programme in cooperation with public services (from the fields of nature conservation, forestry, hunting, fishery, water management and agriculture) and drafters of programmes for drawing EU funds

**May 2006**

Presentation of the first draft of the Programme to the expert public (universities, institutes, expert societies), the Nature Conservation Institute (NCI), and managers of protected areas, and modifications of objectives and measures

**July 2006**

Presentation of the amended draft of the Operational Programme to key participants (agriculture, forestry) and harmonisation of measures in respect to their feasibility

**Nov. 2006**

Second draft

**Nov. 2006 – marec 2007**

Additional harmonisation with NCI

**April - jun. 2007**

Public presentation of the draft (website and two workshops) and harmonisation with local authorities, NGOs, key participants and public services

**Jun. – avg. 2007**

Coordination of feedback from the public presentation with sectors and inter-sector coordination

**Sept. 2007**

Approved by the Council for Sustainable Development

**Okt. 2007**

Adopted by the Government




# More information

Natura 2000 - Microsoft Internet Explorer

Datoteka Urejanje Pogled Priključene Orodja Pomoč

http://www.natura2000.gov.si

Google Go

 **Biseri slovenske narave**

• Domov • Vprašanja in odgovori • English

Iskalnik  Išči

Zabavno Knjižnica Za medije

NVATLAS - Microsoft Internet Explorer

http://gis.arso.gov.si/nvatlas/evimap.asp

## Interactive map:

http://gis.arso.gov.si/

Interaktivni naravovarstveni atlas (interni dostop)

izberi tematski sklop

Narava: Natura 2000

iskanje lokacije

občina: LJUBLJANA

ulica, hišna številka

zemljepisno ime

koordinata y, x

0 68.4 km y=636086.2 x=151440.1

podatek	datum distribucije	vir
RPE	20.1.2007	GURS
DOF5	16.8.2005	GURS
DKN	23.3.2007	GURS
PRS	20.1.2007	AJPES

močvirska sklednica (Emys orbicularis)

enska avtohtona sladkovodna rogo zavarovanih vrst (II. dodatek) in na astlinskih vrst, za ohranjanje območja varovanja Direktive o izhodišču so bila izoblikovana rževanja omrežja Natura 2000 itatih ter slovenske ohranjanju narave.

dišča za vzpostavljanje

Druge objave

POTI